

The WINGFOOT CLAN

A Subsidiary of

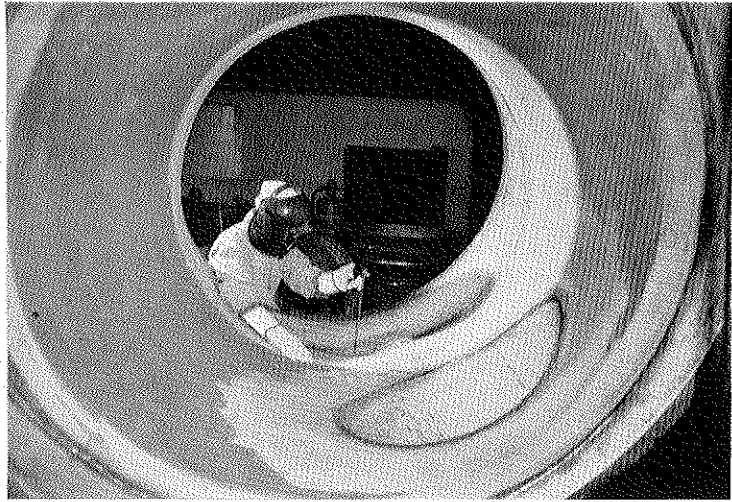
Goodyear Atomic Corporation

The Goodyear Tire & Rubber Company

Volume 17

Pike-ton, Ohio, May, 1970

Number 5



FULL PENETRATION WELDING being done by Jim Cunningham is only one of many rigid requirements followed in the uprating of mechanical testing facilities. See center section for more about the huge uprating program now in process at GAT.

Hospital - Medical Plan

Knowledge Of Your Insurance Programs Could Save You Cash

(Editor's Note: This is the first of two articles designed to highlight GAT's Hospital-Surgical-Medical and Major Medical Insurance Programs.)

Have you ever filed a claim for insurance benefits? Will you ever need to file an insurance claim? Unfortunately, most of us cannot answer these questions with a simple "no". This is why we need insurance protection and the reason GAT pays nearly \$400,000 a year in premiums for the various health insurance coverages it provides to its employees. This means that nearly \$300 annually per employe is paid for health insurance coverage for employes and their dependents. This represents 100% of the cost of Hospital-Surgical-Medical insurance and 50% of the cost of Major Medical insurance.

This article deals with your Hospital-Surgical-Medical, or Basic Plan, benefits. This plan generally covers two areas — in-patient and out-patient services. Included under in-patient services are board, room, and services and supplies furnished by the Hospital during confinement such as use of operating room, x-rays,

laboratory exams, nursing care, drugs, etc. Out-patient benefits include hospital charges for emergency first aid medical attention on the day of an accident or the next following day; hospital fees for the initial visit for out-patient surgery; and diagnostic x-ray and lab exams whether performed in the out-patient department of a hospital or outside of a hospital.

The Surgical portion of the plan provides for surgical benefits payable in accordance with the established Surgical Expense Benefits Schedule with a maximum of \$350 for each disability. Benefits are payable whether the surgery is performed in or out of a hospital.

Also included in the plan are benefits for physician in-hospital calls, anesthesia services, and professional ambulance services.

Following are some questions that are frequently asked by employes concerning benefits available under the Basic Plan:

- Q. When do I become eligible for Hospital - Surgical - Medical Coverage?
- A. You become eligible on the first day of the month following the date of hire and coverage begins on the first day of the month following the date of application provided such application is made within 31 days from your date of eligibility. Otherwise, you must furnish evidence of insurability satisfactory to the insurance carrier. Although the entire premium cost is borne by the Company, you must complete an application form to be enrolled.
- Q. Who is considered to be an eligible dependent?
- A. Your spouse and unmarried children under age 19. Also included as eligible dependents are unmarried children (ages 19 through 22) who attend school regularly and who qualify as dependents for current year federal income tax purposes. This coverage ceases when the dependent marries, reaches age 23 or completes his or her schooling, whichever occurs first.
- Q. Is there a waiting-period for coverage for dependents acquired after the date I am insured?
- A. No. In the case of marriage, your spouse becomes insured on the date of marriage or date of request for change, whichever is later, and in the case of a

Spring Fantasy Dance Set May 9

One — two boogaloo will be the pace at the Spring Fantasy dance co-sponsored by Goodyear Atomic and the Goodyear Women's Club of Portsmouth. The date is Saturday, May 9. There will be dancing from 9 til 1 to the music of The Tom Phillips Sextet. Tickets are \$3 per couple and may be purchased from Recreation or members of the women's club.

As in past years all proceeds from the dance will be used to support the needs of The Happy Heart School and other charitable organizations.

Goodyear Gals — better make plans to get the old boy out May 9.

New Subdivision Organized; Division-wide Changes Made

The announcement of personnel moves April 1, created a cascade of changes in the Purchasing, Technical, Industrial Relations Divisions and the General Manager's staff.

A new Management Control Subdivision in the 100 Division was announced by General Manager, G. H. Reynolds. Selected to head the new Management Control section was 35-year veteran Maurice R. Zigler, with Charles Ray moving to superintendent, materials and service, replacing Zigler.

Other moves in purchasing saw Bernie Haas assume Ray's responsibilities as supervisor, materials and janitor service. Marvin R. Kennard was promoted to section head, material control. Charles E. Horner replaced Kennard as receiving and shipping foreman and Alto Byrd was promoted from the hourly ranks to foreman, janitor service.

In the Technical Division change announced by Manager C. D. Tabor: Paul E. Forsyth was named as supervisor of data processing. Forsyth and Gordon Williams will report to Roy Brown, assistant manager of the Technical Division.

The newly formed Management Control Subdivision will assume the responsibilities of wage and salary administration, budget preparation and analysis, control of standard operating procedures, processing of reimbursement authorizations and preparation of corporate reports to AEC and the parent company.

In his new assignment Zigler will report to R. B. Boeye, administrative assistant, with wage and salary administration personnel under his responsibilities.

During his 35-year tenure Zigler received a variety of assignments. He joined Goodyear-Akron in 1934 as a clerk in warehousing and shipping; became a member of the Production Squad in 1936 and was assigned to the Balance Squad in 1940. After serving three years in the Armed Services, he returned to Akron as a squad foreman. In 1947 he took over the secretarial duties for Russell DeYoung when DeYoung was vice president. After a variety of training assignments in GT&R "service" organizations Zigler was made storekeeper in 1951.

"Zig" transferred to Goodyear Atomic in April 1953. He held the position of supervisor of stores until 1958 when he was promoted to superintendent, materials and service. The Ziglers live in Brewer Heights, Chillicothe.

Ray joined GAT in August, 1953 as a materials man. He became chief stores clerk in January 1954 and was promoted to stores foreman in April 1955. Charlie moved to stores

(Continued on page 4)

People On The Move



Zigler

Ray

Forsyth



Kennard

Horner

Byrd

new-born, the child is covered from date of birth. However, to avoid delay in coverage, it is important that you make application for "family" coverage within 31 days from the date of your marriage.

Q. Is there any limitation on daily hospital benefits while I am confined as a bed patient in a hospital?

A. Yes. The full amount is paid for board and room while you or one of your dependents is confined as a bed patient in any lawfully operated hospital when occupying a ward or semi-private room. If you occupy a private room, an amount equal to the semi-private rate as furnish-

(Continued on Page 2)

Know Your Insurance!!

(Continued from Page 1)

ed by the hospital is payable toward the cost. Coverage is limited to a maximum of 120 days during any one continuous period of disability.

Q. Are in-patient hospital benefits limited to room and board charges?

A. No. Hospital charges are paid in full for all necessary services and supplies furnished, including but not limited to: use of operating room, x-ray and laboratory examinations, regular nursing care, drugs and medicines and x-ray interpretation charges by a radiologist or pathologist. Items normally not covered include telephone, television, and any other personal items.

Q. Are "intensive care unit" and "intensive care nursing" charges by a hospital covered?

A. "Intensive care unit" charges are generally payable. However, where there is an "intensive care unit" charge and a room charge on the same day only the higher of the two will be paid. "Intensive care nursing" charges are payable when the service is rendered by staff nurses of the hospital and the patient is not confined to a private room.

Q. What surgical benefits am I entitled to?

A. You or your dependents are entitled to surgical benefits up to a maximum of \$350.00 for each disability. Payment is made in accordance with the established Surgical Expense Benefits Schedule. The amount paid will not exceed the actual charges made by the physician. These benefits are payable whether the surgery is performed in or out of the hospital.

Q. If two operations are performed during the same disability do I receive payment for both?

A. Normally, if more than one operation is performed, payment will be made for each but not to exceed a total of \$350 for each disability. However, there are certain types of surgery that are exceptions by contract language or insurance carrier rulings.

Q. What coverage do I have for medical care while a bed patient in a hospital?

A. Payment will be made for doctors' fees for hospital calls up to \$5.00 for each of the first two days and up to \$3.00 for each day thereafter, not to exceed a total of 70 days.

Q. Is it possible to receive payment for medical care when surgery is performed?

A. Yes. Medical care benefits would be payable for any hospital calls that preceded the operation.

Q. What determines the amount of

anesthesia benefit that is payable?

A. The anesthesia benefit payable is based upon the benefit payable under the established Surgical Expense Benefit Schedule. The maximum anesthesia benefit payable is \$50.00.

Q. What provisions are made in the plan for ambulance services?

A. Up to \$25.00 for each disability is payable for expenses incurred for necessary transportation in a duly licensed ambulance to or from a hospital. No other mode of transportation is covered and maternity cases are excluded.

Q. What maternity benefits are provided under the plan?

A. Maternity benefits are available only to female employes who insure their husbands and to wives of male employes.

Hospital expenses incurred as the result of pregnancy or childbirth will be payable on the same basis as all other conditions except that no benefits will be payable for out-patient services. Children will be covered from birth.

Maternity benefits will be payable for pregnancies having their inception after the effective date of family coverage. Surgical benefits are also available in accordance with the established Surgical Expense Benefit Schedule.

Q. Are out-patient hospital charges for emergency first-aid medical attention payable?

A. Yes, provided that the treatment is for an accident or injury and the service is rendered by the hospital on the day of the accident or the next following day. There is no provision for payment of hospital emergency room charges for treatment of an illness.

Q. Are benefits payable for physicians' services required as the result of an accident or injury?

A. Such services are covered whether performed in the Emergency Room of a hospital or the physician's office whenever a surgical procedure is involved. No benefit is payable for treatment only or for follow-up visits.

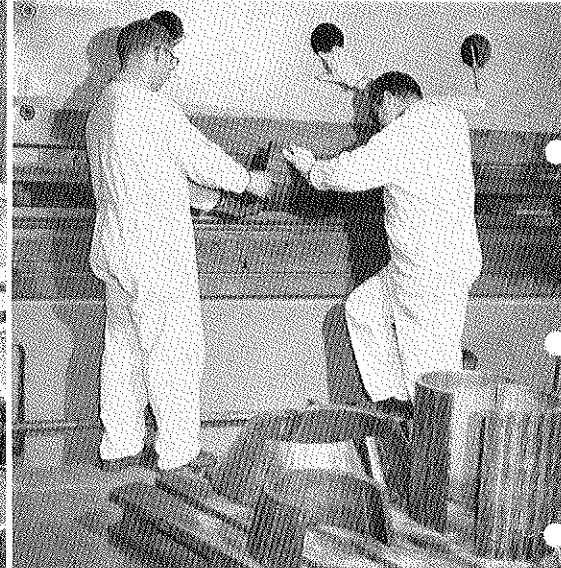
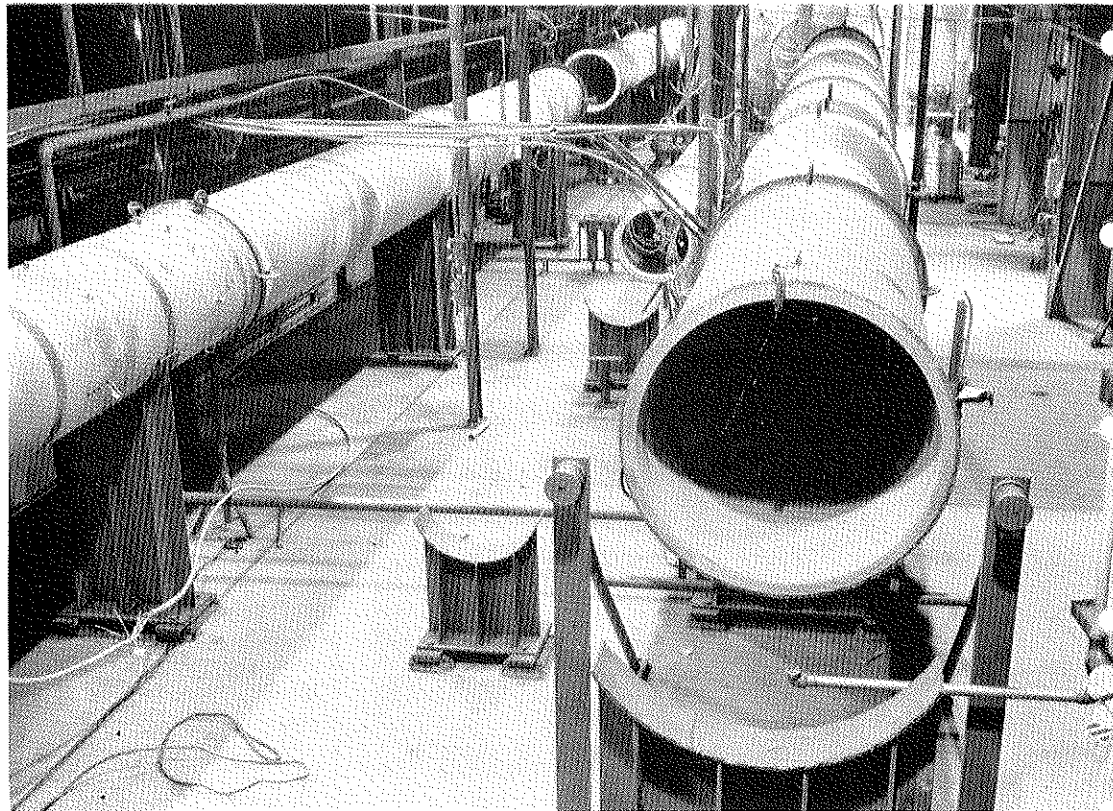
Q. Are hospital benefits payable for surgery without confinement?

A. Yes. Out-patient hospital fees on the initial visit will be paid in full.

Q. How do I file a claim for benefits under the plan?

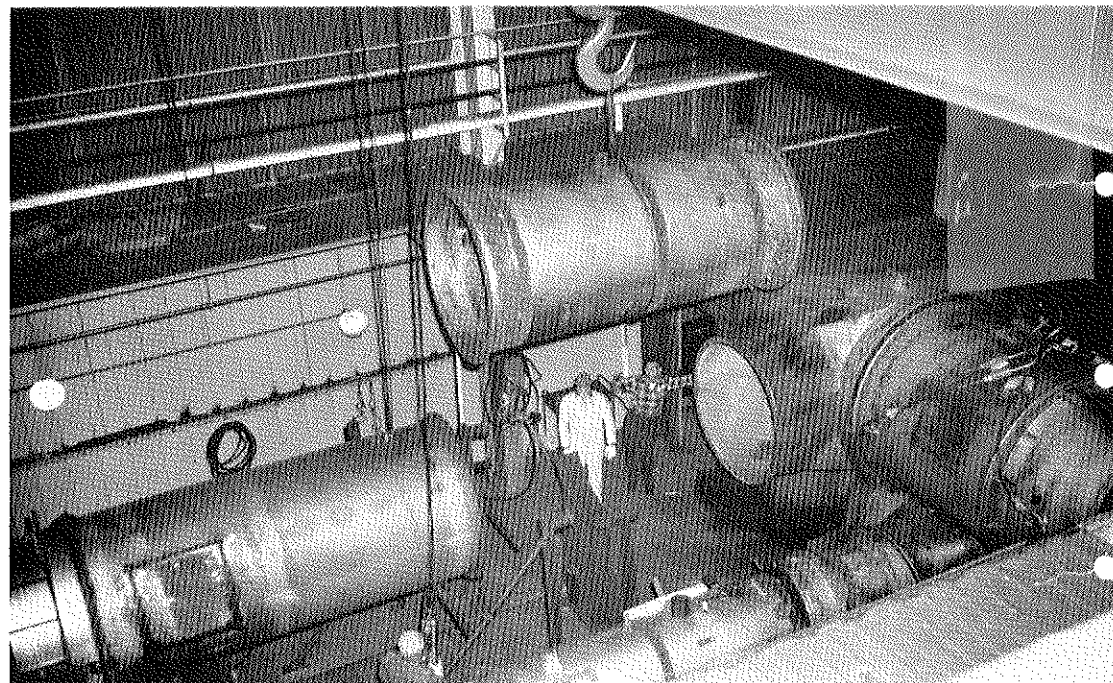
A. Hospital and Physician claim forms may be obtained from the Insurance Section, X-100 Building (across from Credit Union). Local area hospitals do maintain a stock of our hospital claim forms.

(Continued on Page 4)

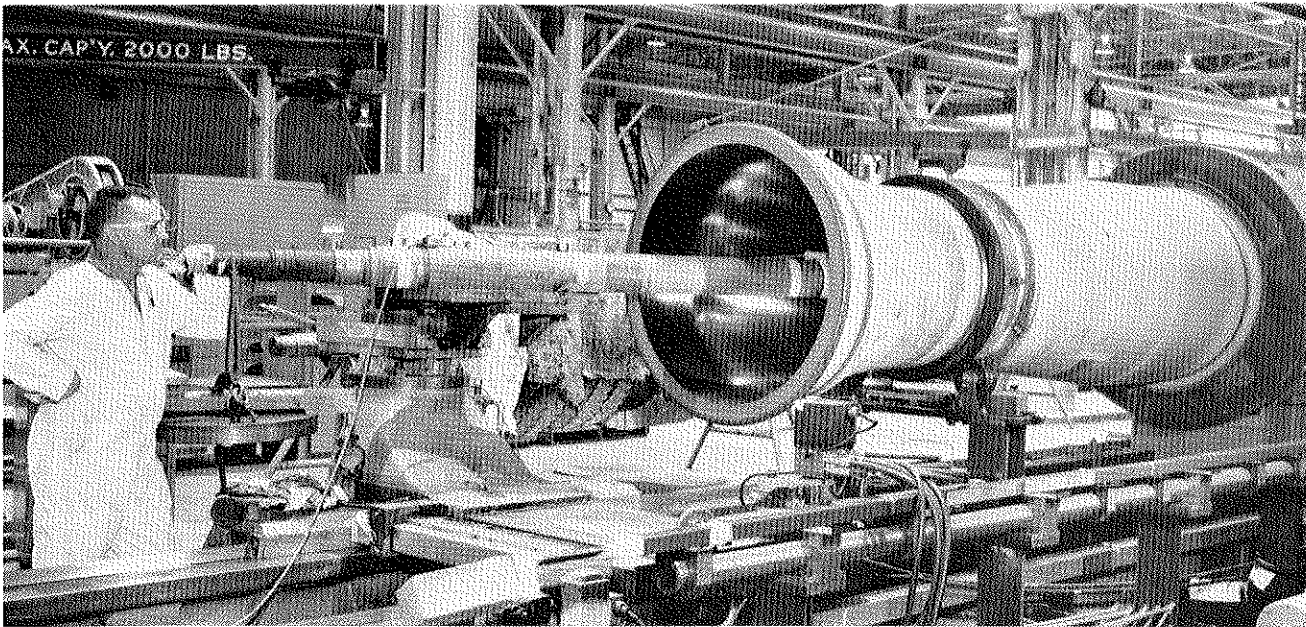


ENGINEERING The huge uprating project required many hours of planning, designing and estimating by engineering personnel. The task of coordinating the engineering activities fell in the capable hands of head engineer, Lou Miller.

COLD STEEL begins to take form as the hands of maintenance mechanics Glenn Shultz and James Johnson use the giant brake press to "rough out" the shell of one of the six venturis used in the uprating program. (See picture upper right.)



EASY DOES IT "Like putting the baby to bed" was the comment made by Ralph Stewart and Ernie Williams. The "baby" referred to was the final section of 54" pipe, weighing 2400 lbs., being slipped into place.



MECHANICAL EYES Six venturis ranging up to 52" in diameter, 12 feet long and weighing 2500 lbs. were fabricated by shops maintenance. Each venturi, like the one being polished by John Wills, will play a vital role in the testing of new equipment designs.

LOOK best
es the partially
test facility.
ompleted the
equipment will
550 feet of pipe
g from 24 to 54
and will weigh
tons. Total cost
ntire project
n close to
0.

Future Development Plans Aided by Test Loop Upgrading Program

A considerable amount of design study, plant modification and engineering work is presently being performed at GAT in preparation for an anticipated Cascade Improvement Program (CIP).

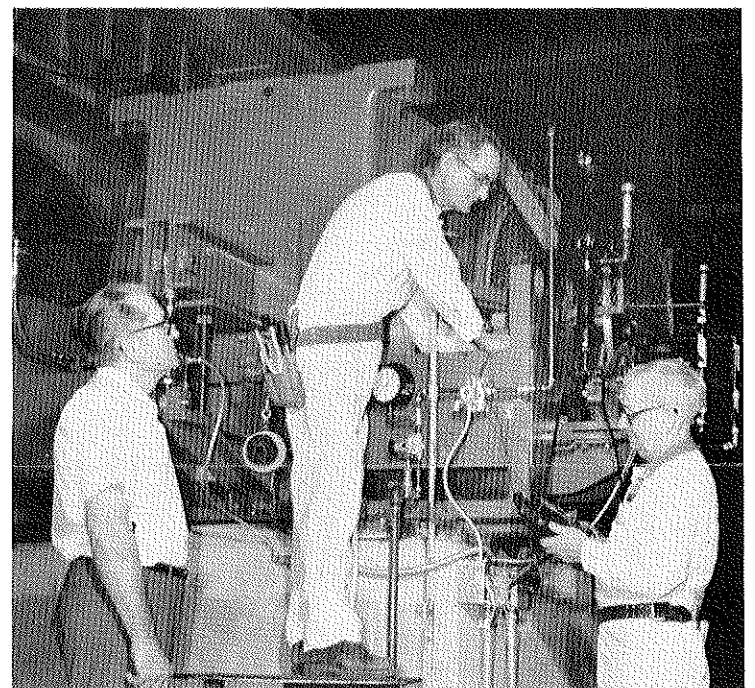
One large project currently underway is equipment upgrading program in the test loop facility where two test loops, used for evaluating various sizes of production equipment, are being upgraded. The two test loops are a part of the Mechanical Development Department's mechanical testing facility, where tests are performed on gaseous diffusion equipment such as compressors, converters, heat exchangers, motors, valves and other mechanical equipment. The information obtained from these tests provide a "yardstick" for the evaluation of equipment performance, design changes and cascade operating conditions. The test loops have played a key role in past development efforts, which ultimately resulted in making enriched uranium competitive with fossil fuels. This important role is expected to continue in the decade of the seventies.

The purpose of the loop upgrading program is to provide the capability for equipment evaluation at the upgraded power levels envisioned for diffusion plant operations in the seventies. Thus, test range capability is being expanded for a more thorough and complete testing program.

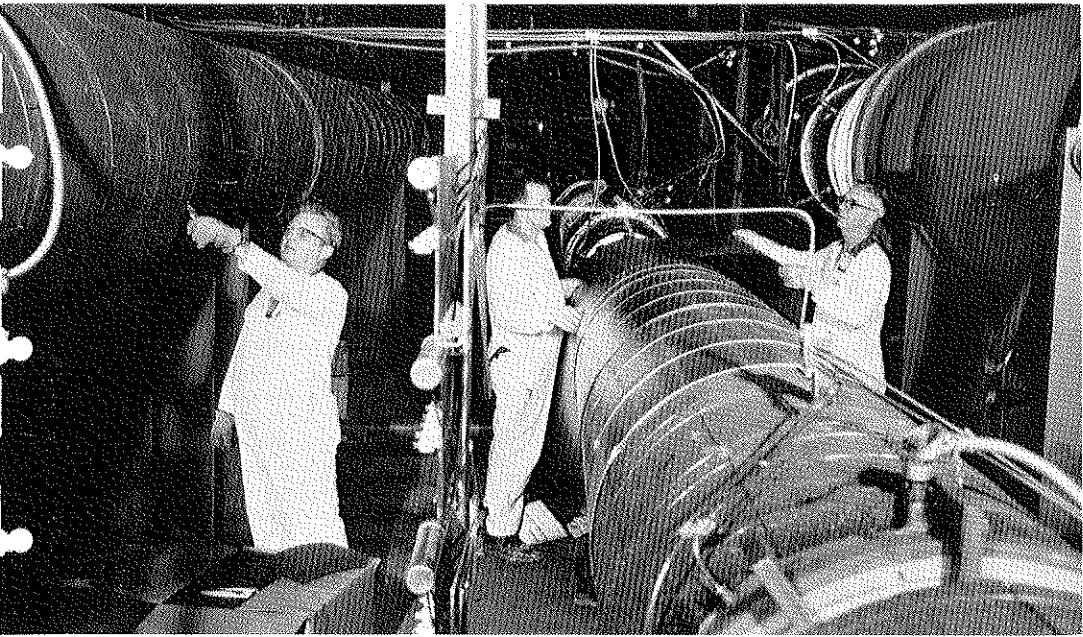
The cost of the loop upgrading program is expected to exceed \$400,000. It involves modifications to the piping, coolant systems, UF6 charge and evacuation system, compressor motors and instrumentation for the measurement of pressure, power and control of operating conditions. Six large flow devices (venturi type) are being fabricated in the shops. The venturis will play a vital part in accurately determining the value of future equipment modifications.

The entire loop upgrading program is large enough in scope to involve personnel from Plant Engineering, the X-720 Shops and practically all of GAT's maintenance forces.

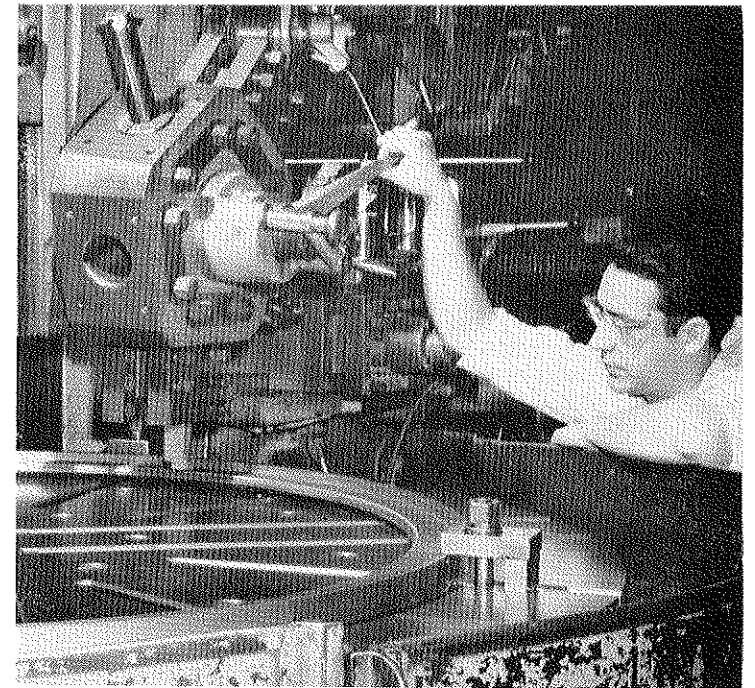
These pages show only a few of GAT's highly skilled and trained employees, working each day with their eyes toward the future.



DYNAMOMETER rated at 4500 horsepower (one of the largest of its kind) was designed by engineering and built by GAT maintenance forces. The Dynamometer being checked out by Bill Clements, Walt Singer, and John Glover is used to determine performance characteristics of the equipment.



RAP IT UP Once the piping was installed maintenance mechanics Don Ray, Ralph Poetker and Carl Griffith covered it with 3500 ft. of pre-formed segments of high temperature, nonflammable, foam glass insulation; the final step was installation of an aluminum jacket over the insulation.



PRECISION WORK Hundreds of precision parts were "turned out" by machinist Jim Patton and his co-workers for the construction of the huge dynamometer.



SOMETHING SPECIAL "Special" refers to the plaques displayed by Angie Hopkins, data processing, for the fine showing made by Goodyear Atomic and its employes in the 1969 All-In-One drive. The awards were presented by Ross and Scioto County United Funds for GAT's improved performance in its 1969 campaign.

Insurance Pays Off

(Continued from Page 2)

You should file all claims promptly with the Insurance Section. It is important that you sign each form. If you wish to "assign the benefits" to the hospital or physician involved, it is necessary that the form be signed to that effect, in which case the payment will be made to the hospital or physician rather than you. Only the employe may assign benefits on a claim.

Do not wait until you return to work to submit a claim. The prompt filing of claims can reduce the delay in receiving the

benefits to which you are entitled.

Q. Is a separate claim form required for each service rendered?

A. Generally, yes. In the case of a claim for anesthesia benefits, a statement from the anesthetist will suffice. The statement should include the name of the patient, the date of service and the amount charged.

It is important that you notify the Insurance Section promptly when there are any changes in the status of your dependents. This includes additions as well as deletions.

These are answers to some of the more frequently asked questions about your Hospital-Surgical-Medical benefits. It is hoped that these answers will be beneficial to you. As

Personnel Changes

(Continued from Page 1)

general foreman in 1966. He was promoted to supervisor, materials in December 1968 and held that position until receiving his present assignment as superintendent, materials and service.

During World War II he spent three years serving Uncle Sam in the U. S. Navy. Prior to joining GAT, he was employed by the U. S. Army Corps of Engineers. Charlie and his wife Judy (D-501) are residents of Jackson.

Forsyth joined GAT in July 1954 in machine tabulation. In January 1957 he was made section head in electronic computing and in August 1962 took over as section head in data processing. The Forsyths are residents of Jackson.

Kennard came with GAT in December 1953 as a senior clerk. He was made chief traffic clerk in March 1961 and in December 1968 was promoted to foreman, receiving and shipping. Marv and his wife Rita (D-301) live in Minford.

Clan To Carry Graduate Photos

The Wingfoot Clan will once again feature graduating sons and daughters of GAT employes.

Employes are requested to submit a pocket-size black and white photo of the senior. Accompanying the photo should be the student's name, school, parent or parents working at GAT and the department where the parent works.

Pictures must be submitted to the Wingfoot Clan office no later than May 15.

a reminder, also these same rules and regulations apply to all retirees. The only difference with retirees is that Medicare A payments (Hospital Plan) are not duplicated.

Next month an article on Major Medical coverage will appear. In the meantime if you have any questions concerning the provisions of the Hospital-Surgical-Medical Plan, be sure to contact the Insurance Section, X-100 Building, extension 2695.

CLASSIFIEDS

FOR SALE

1969 Buick LeSabre "400", 2-door hardtop, vinyl roof, 400 CI engine, power disc brakes, power steering, factory air conditioning, tinted glass, 4 new tires. Make an offer. Phone Jackson 286-1539.

Coldspot 6500 BTU air conditioner, window-type, same as new. Phone Waverly 947-4137.

Dial Calipers — New Condition, w/case. Phone Portsmouth 353-1861.

Cushman Motor Bike — 1967 Silverstreak, Good Condition, \$125. Phone Waverly 947-4056.

Gold Medal Winner Gets Ready To "Give It A Go"

Goodyear's Gold Medal winner Gene Ridgeway is getting ready to go at it again . . . The gold medal referred to is the one he won in the 13th Annual National Wheelchair games held last year in New York City. Gene took top honors in the National Wheelchair Slalom Event (a wheelchair obstacle course race).

With Goodyear as a sponsor Gene hopes to add to last year's laurels by entering six district events: bowling, 100 yard dash, 60 yard dash, precision javelin throw, Michigan mile, and table tennis doubles. By faring well in the district games held in Detroit in May, he then becomes eligible to compete in the 14th National Wheelchair games in New York City in June.

Coming up a winner has been a long, tough haul for Gene; after being paralyzed from the waist down from an injury when he was 18, he spent several months in a rehabilitation center for the handicapped in Columbus.

In the rehabilitation center Gene learned to cope with his disability and develop skills required to become an independent citizen. Development of these special skills led to the pursuit of a drafting career and enrollment in the drafting program at the Jackson Manpower Training Center. After completing the course Gene worked in Columbus two years as a draftsman for a civil engineering firm. He, his wife (Norma) and their daughter (Sherry) returned to Jackson when he joined GAT's Draftsman Apprentice Program last January. Gene expects to complete his apprentice

training in early 1971.

Gene became interested in wheelchair competition through a mutual friend and has served as an official as well as a contestant.

He pointed out some 1200 handicapped persons will compete in eight district games in May, with 450 moving on to national game competition. Contestants for three international wheelchair games will be selected from the top qualifiers in the national event. Events listed for the games include archery, bowling, field events (javelin, discus, shot put), swimming, track events (dashes, relays, slalom), weightlifting, and table tennis.

Wheelchair games have been seeing a steady growth since their inception in 1957. It is estimated that there are 3,000 wheelchair athletes in competition and another 7,500 wheelchair people who are participating in sports. Internationally, over 50 nations are participating in wheelchair sports.

When asked about defense of his gold medal — Gene noted, "Well, I'm going to build up the arm muscles, oil up the wheel bearings and roll the tires off the old buggy."

Gene's friends at GAT wish him the best of luck in "defense" of his 1969 Gold Medal.



GOLD MEDAL WINNER Gene Ridgeway, plant engineering, proudly displays the awards symbolic of his victory in the 1969 National Wheelchair Games. Insert shows Gene in his final "drag" across the finish line to win the games' slalom event.

1970 Golf Program

GAT Golf Committee announced the following plans for the 1970 golf season.

*Golf Playday	May 16	Franklin Valley- Jackson
Flight and Company Championship	August 1	Portsmouth Elks Country Club
Company Championship (Second 18 holes) (Low 24 golfers qualify)	August 8	Fairgreens Country Club— Jackson
Mixed Two Ball (9 holes)	August 30	Portsmouth Elks Country Club
*Team Best Ball	Sept. 12	Skyline Golf Course Waverly, Ohio

*Co-sponsored by Goodyear Foremen's Club

Members of the Golf Committee are: Dick Sparks (D-552); Dwain Clark (D-341); Roscoe Wimer (D-812); Carl Ferguson (D-101); Paul Smith (D-375); Jack Weeter (D-812); Harold Rouff (D-532); Howard Galloway (D-552); Marty Redden (D-513) and Charlotte Yates (D-201).