

The WINGFOOT CLAN

A Subsidiary of

Goodyear Atomic Corporation

The Goodyear Tire & Rubber Company

Volume 19

Piketon, Ohio, July, 1972

Number 7

"Something For Everyone" Planned for Annual Picnic

Picnic season is upon us once again, and with it come the thoughts of GAT's grandest family outing--the Company picnic, July 22.

Camden Park in Huntington is once again the scene of the annual gala event. Rides, bingo, games, horseshoes, square dancing, adult games, and many other fun activities are planned for the day.

Free Rides

The park will open at 11 a.m. for those interested in arriving early. Free rides are on tap for "youngsters of all ages" beginning at 12:00 Noon and lasting until 5:00 p.m.

Safety Contest

The Safety Department will add to the picnic festivities with special games and prizes. A dart board contest will be held and twenty drawing prizes will be awarded during the day.

Square Dancing

Square dancing proved so popular in 1971 that it will be repeated this year. Caller Bill Sparrow will hold

dances for both beginner and experienced dancers. Dancers will "square up" in the pavilion next to the Putt-Putt Golf Course from 12:30 to 2:00 p.m.

Adult Games

The ever popular adult games will get under way adjacent to the bingo area at 1:00 p.m. Balloon tosses and many other games will be highlighted. Prizes will be awarded to the winners.

Horseshoe Championship

The clanging horseshoes at 1:00 p.m. will signify the beginning of GAT's Champion Horseshoe Pitching Contest. Competition will be for two-man teams using Company horseshoes. The tournament will be limited to 32 teams on a first come, first served basis. Registration forms for the contest will be available at the Camden Park main gate.

Bingo

The call for bingo will begin at 2:30 p.m. Twenty to twenty-five attractive prizes will be awarded to those lucky enough to cover the squares.

Grand Drawing

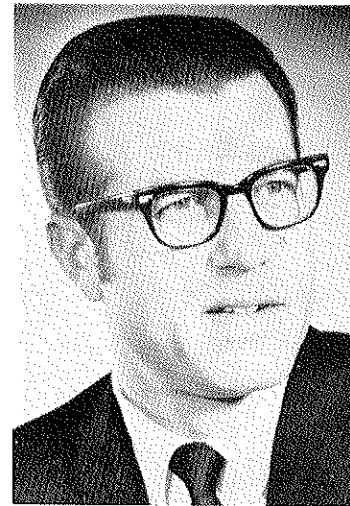
The day's grand finale will get under way at 4:00 p.m. when the grand drawing will be held.

Employees are once again reminded that this is a GAT picnic; friends and associates are not permitted. Their presence only leads to a more congested park. Your cooperation is requested.

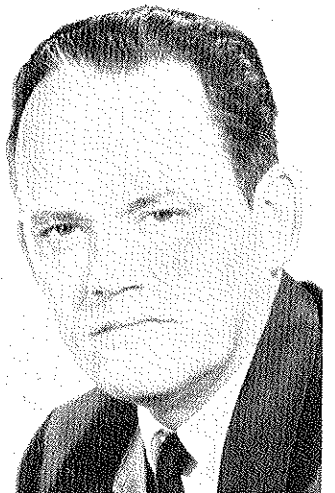
To be eligible for the grand drawing prizes, an employee must be present or must have worked on July 22. Employees working on the day of the picnic and whose family will be unable to attend should turn in their grand drawing tickets to the Shift Superintendent's office no later than 3:00 p.m., July 20.

Those attending the picnic from the Portsmouth Area are encouraged to take Route 52 to the new Huntington Bridge, turn west (right) on Route 60, and proceed to the Park.

Picnic Co-chairman Jack Crawford and the committee members extend a cordial welcome to each GAT family and wish each a most enjoyable picnic outing.



G. D. Althouse



N. H. Hurt

Hurt And Althouse Assigned New Duties

A change in managerial responsibility in the Plant Engineering and Maintenance Division will occur on July 1. Deputy General Manager N. H. (Nate) Hurt will relinquish his role as manager of the Plant Engineering and Maintenance Division to assume the responsibility of coordination of all capacity expansion activities. Hurt will continue in the capacity as the plant's deputy general manager. G. D. Althouse was appointed as manager of the Plant Engineering and Maintenance Division to replace Hurt.

During his quarter century with the company, Hurt has seen varied responsibilities. He first joined Goodyear in 1947 as a staff member of GT&R's Corporate Engineering Division. He was senior engineer in charge of major plant expansions when he transferred to GAT as superintendent of plant engineering.

He returned to Goodyear Akron in February 1956 as manager of chemical plant engineering.

From 1959 through 1961, Hurt acted in an engineering advisory capacity to the Brazilian government in the synthetic rubber field. He was named plant manager of the new Logan, Ohio pliotrim plant in March 1964; in 1967 was named manager of pliotrim operations, and in January 1968 was promoted to manager of urethane foam operations, supervising five facilities of Goodyear in Ohio, Canada, California, and Illinois.

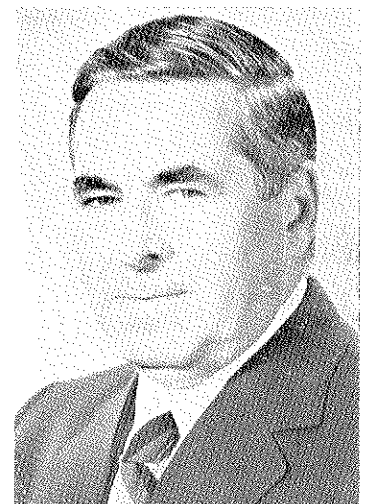
Hurt holds a B.S. in mechanical engineering from the University of Colorado. He is a member and has held various offices in the Ohio Society of Professional Engineers, American Society of Mechanical Engineers, and American Institute of Chemical Engineers. He is a director of the Chillicothe Rotary and vice president of Chief Logan Council Boy Scouts of America.

Althouse first came with GAT in 1957 as a member of the Technical Squadron Training Program. He was named junior engineer in 1957 and promoted to engineer in Janu-

ary 1961. Althouse was made supervisor, utilities maintenance, in March 1961, and in January 1967 was promoted to superintendent, process maintenance. He was named to the position of assistant division manager, Plant Engineering & Maintenance Division, in September 1968.

Althouse is a graduate of Penn State University with a B.S. in chemical engineering. He is a member of the Presbyterian Church and active in local community affairs.

Promoted



T. J. (MAC) McGRAIL was promoted to Cascade Maintenance general foreman on June 1. In his new assignment, Mac will be responsible for cascade maintenance in the process areas under Supervisor, P. R. Cornett.

Ask Tom Snead

How Important Is YOUR Blood?

Editor's Note: The importance of YOUR blood program was emphasized recently when one of our co-workers, Tom Snead (Laboratory), had open heart surgery. His requirement of 28 units of blood was covered completely under our Company blood program. Tom is back on the job now, working regularly and living a normal life. Tom expresses his feelings about our employe blood program in the following editorial.

To My Fellow Goodyearites:

It's that time again . . . the semi-annual visit from the bloodmobile. I would like to take this opportunity to urge all fellow employes to please donate to this worthy cause. I urge this with some justification as I have recently experienced open heart surgery. During my operation and afterwards, I required 28 pints of precious, life-sustaining blood which may have been donated by some of you.

While hospitalized, I became friends with another open heart surgery patient who required 49 pints. Without this blood we and others like us would not have been able to return to our families, to resume our normal activities and to thank God each day just for being alive. It couldn't have been done without your help -- without your donations of blood.

The blood program is a very meaningful Company-sponsored activity which is necessary to enable some people to live. It can only be successful if you participate.

I never thought it could happen to me, but it did. IT COULD HAPPEN TO YOU! Won't you please give?

TOM SNEAD

THE BEST WAY TO INSURE CONTINUED SUCCESS
OF OUR EMPLOYEE BLOOD PROGRAM IS TO GIVE --

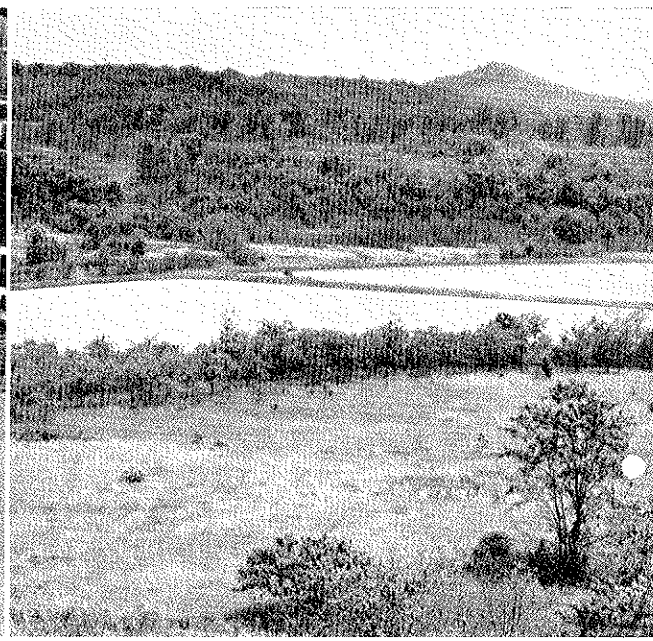
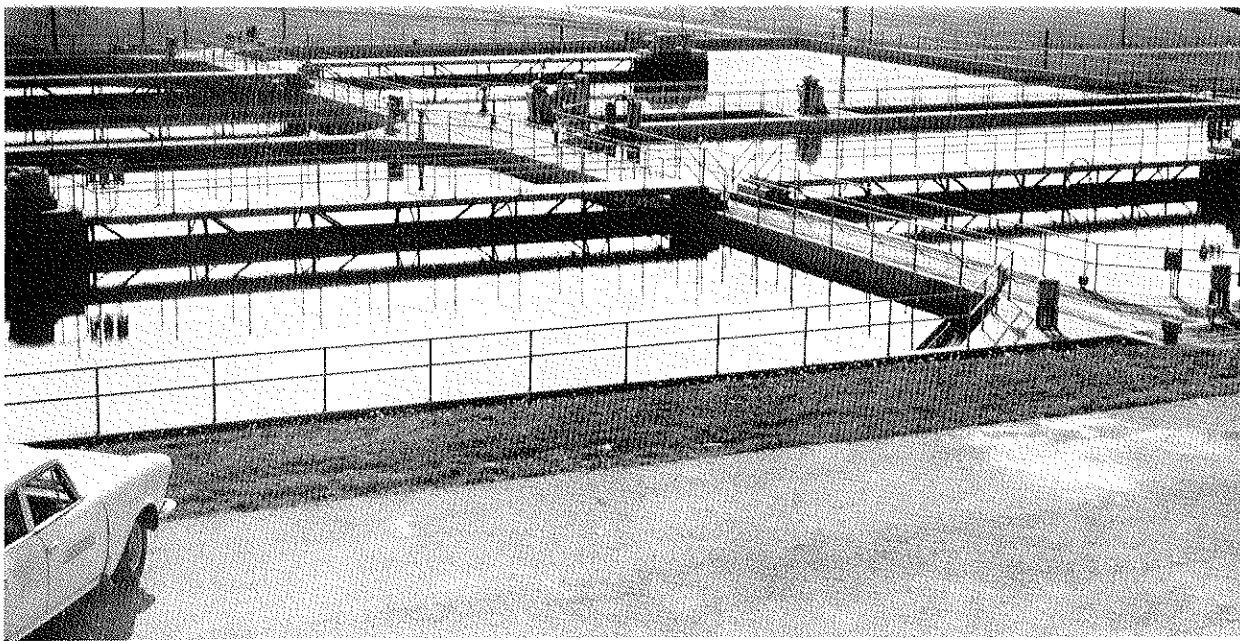
July 10 -- 12 Noon - 5 P.M.
July 11 -- 7 A.M. - 11 A.M.
South Wing, X-100 Building

Employes Vote To Reject Union

Employes of the Laboratory and other selected classifications rejected representation by the AFL-CIO Oil, Chemical and Atomic Workers. In an election conducted under the direction of the National Labor Relations Board on June 6, sixty-seven employes were eligible to vote in favor of or against participating as a member of OCAW Local 3-689. The results of the election showed 41 employes against representation, 21 for representation, with 5 employes not voting.



Tom Snead



ENVIRONMENTAL CONTROL is accomplished in a variety of ways as depicted in the series of top photos. Our modern water treatment facility (l) is capable of purifying enough sanitary water to supply a small city. The panoramic view in center is one of several huge basins designed to remove solids from water. GAT's Environmental Control Committee is charged with the respon-

sibility of guiding our environmental program and policies. Committee representatives include: (l to r) Ben Kalmon (D-212), Dave Netzer (D-532), Tony Saraceno (D-521), Virgil Emler (D-232), Bob Shepherd (D-761), Chuck Trivisonno (D-521), Ken Baldwin (D-761), Ralph Wilcoxon (D-761), and George Cooke (D-852). Not present Joe Eyre (D-230), Bill Wiehle (D-801) and Sam Hulett (D-212).

Our Continu

POLLUTION . . . not a pretty picture word, rather one thoughts of disgusting filth; choking atmosphere; dirty, slug rivers; cluttered, littered highways; belching industrial smoke. a word which has aroused concern and anger of millions of recently has it stirred action on both local and national levels

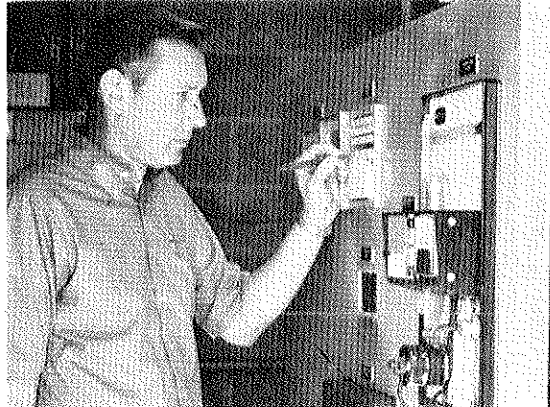
We at Goodyear Atomic have long been aware of pollutants. We have continuously committed ourselves to maintaining standards of environmental control possible. It is important that everyone be conscious of our Environmental Control Program and aware of the battle against pollution.

Our plant is like most other industrial plants. We create a production by-product. GAT's positive approach to environmental control has brought excellent results. By use of proper environmental equipment and careful monitoring of all of our facilities, we can be assured that our environment is safe to work in and within state and federal guidelines.

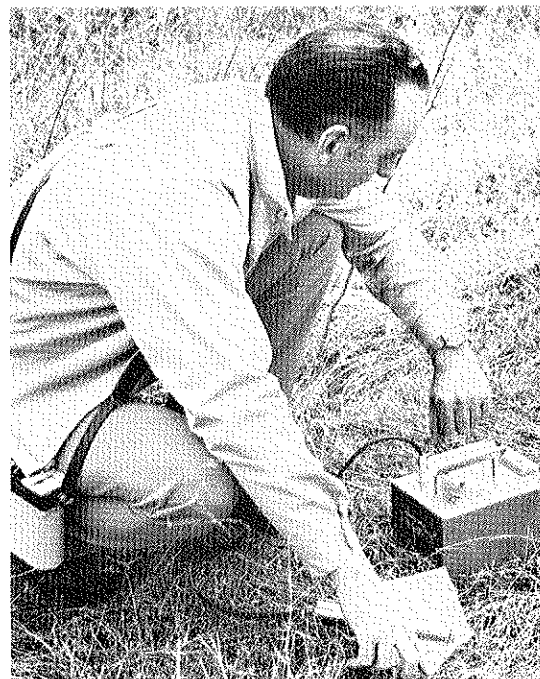
A considerable amount of time and money is being spent to upgrade our standards. To date, over \$500,000 has been spent to upgrade and expand our pollution control facilities. But, our environmental control program is there. Projects presently in various stages of design or construction are worth more than \$1,800,000, and plans for the future may require more or four times that figure.

Improvements in sewage treatment, construction of hold methods of sampling and updated water treatment are only a part of improvements that have been made in our environmental control program.

Removal of our more common pollutants is accomplished by modern methods. Modern, well-equipped sanitation facilities are ma-



AIR, LAND AND WATER. John Ortman is one of several Industrial Hygiene personnel responsible for environmental sampling. Environmental monitoring is a continuous process: all plantsite streams are tested round-the-clock for various pollutants. Monitoring stations and mobile units are equipped with sophisticated equipment to provide a continuous picture of airborne pollutants. These and a variety of other sampling methods are used to monitor the effectiveness of our environmental programs.



TECHNOLOGY AND TECHNIQUE. Instrument maintenance personnel (l) Jim Anzelmo and Dick Vallery put their skills to work to improve our outdated (commercially made) background radiation meter. Their unique

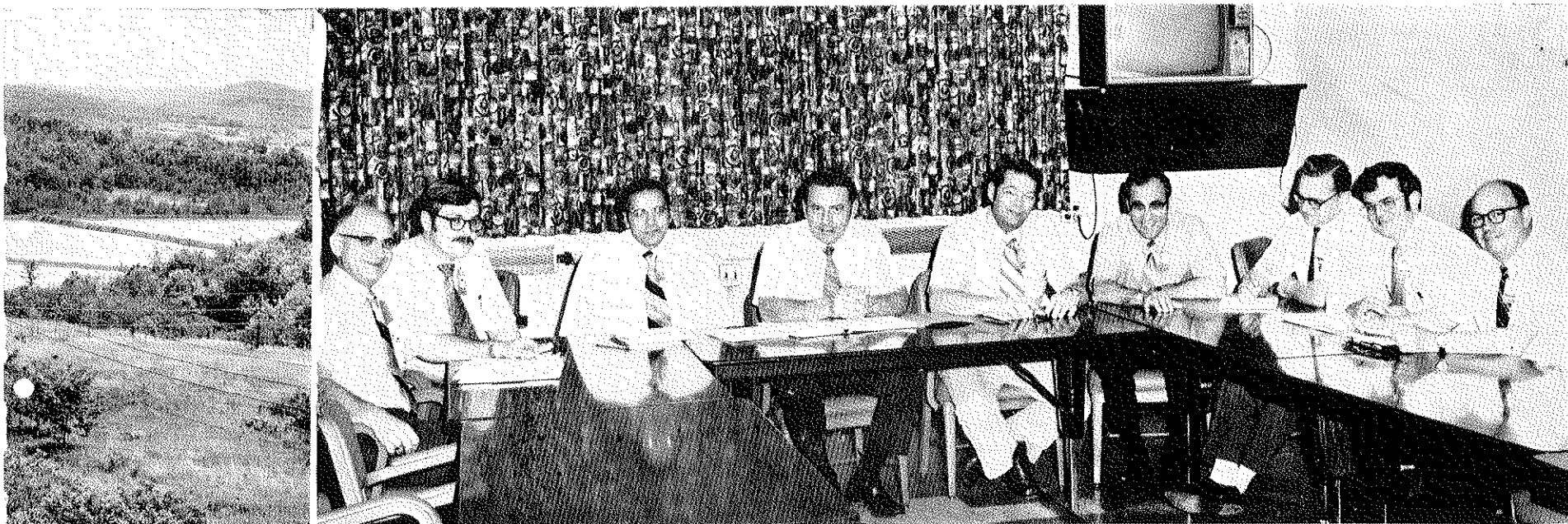
and improved design make it possible for Buck Schweinsburg to do a quicker and more efficient job of monitoring background radiation levels in areas around plantsite.



MOUNT TRASHMORE could be applied to the land-fill area used to dispose of our refuse. The land-fill method has proved to be a modern, efficient, practical way to dispose of the mountain of trash we accumulate annually.



APPARATUS. mental scrubber The . . .



g War On Pollution

ings up
ams and
TION . . .
and only

age treatment. Several lagoons are provided to allow settling of suspended solid materials from water before it is returned to the natural environment. The relatively small amount of combustible materials required for operation makes air pollution a minor problem.

its prob-
best stan-
employe
at we are

Industrial Hygiene and Health Physics is responsible for obtaining samples and analyzing contaminants that may be found in the air, water, soil, and vegetation surrounding the plantsite. Sampling stations are located at various positions within the perimeter of the plant facilities, and routine samples are collected and analyzed in the surrounding area up to five miles from plantsite. The stations are maintained for continuous monitoring for any airborne pollutants and all water leaving the plantsite. If abnormal weather conditions or operating procedures occur, special samples are collected and analyzed for suspected pollutants.

materials
blem has
and care-
environ-

In addition to normal industrial pollutants, Goodyear Atomic is concerned with the amount of radioactive pollutants in the environment. Radioactive materials that cannot be recovered economically must be disposed of by burial in sealed protective containers. Elaborate precautions are taken to insure that radioactivity remains within established limits.

tain high
p and ex-
not end
will total
as three

But our plans do not end there — future projects are being developed that will keep GAT ranked as an environmental leader. Some of the long range problems that will receive future attention are fluoride emission control, decreasing concentration of sulfur dioxide in steam plant gases, updating and purchase of additional Health Physics equipment, and removal of contaminants from waste waters.

ds, better
he dozens

A great deal remains to be done, and with every employe's help we can continue to lead the area in environmental control and contribute to the solution of one of our most serious national problems.

y several
for sew-

An Editorial

Ecology And You

It seems, anymore, that in every magazine you pick up, there's an article about ecology or pollution, and to think but a few years ago hardly anyone could have told you what these words meant!

Most everyone has become his own self-styled conservation expert; everybody including government and individual politicians at the federal, state and local levels, conservationists, sociologists, universities, student groups, public organizations, private foundations and industry.

The real benefit of the ecological movement will be that man can learn to control environment. The real problem facing us now, is how?

One of the biggest factors in controlling the environment in the future is coping with the population explosion. The number of people in the world has tripled in the last one hundred years — nearing 4 billion.

The United Nations has established that the population will double again in the next 30 years. And improved medical service throughout the world is keeping more people alive and living longer. There is bound to be a strain on the world's resources.

Society has yet to learn to sustain itself over the insufficient food supply, the pollution caused by the areas with great concentrations of people, the living conditions and social unrest in the big cities.

The great urbanization has created the pollution problems — air pollution, noise pollution, water pollution, and every other kind of pollution currently and not yet identified.

What can we do?

Individually, our portion of the overall picture is relatively small, and any appreciable difference in the "solution of pollution" will be noticeable only if there are combined efforts on the part of all of us to reverse the trend.

Sound planning and cooperative effort can do wonders. A simple thing such as motor tune-ups is a start. Also limit burnings of rubbish and watch where you deposit those cans and bottles.

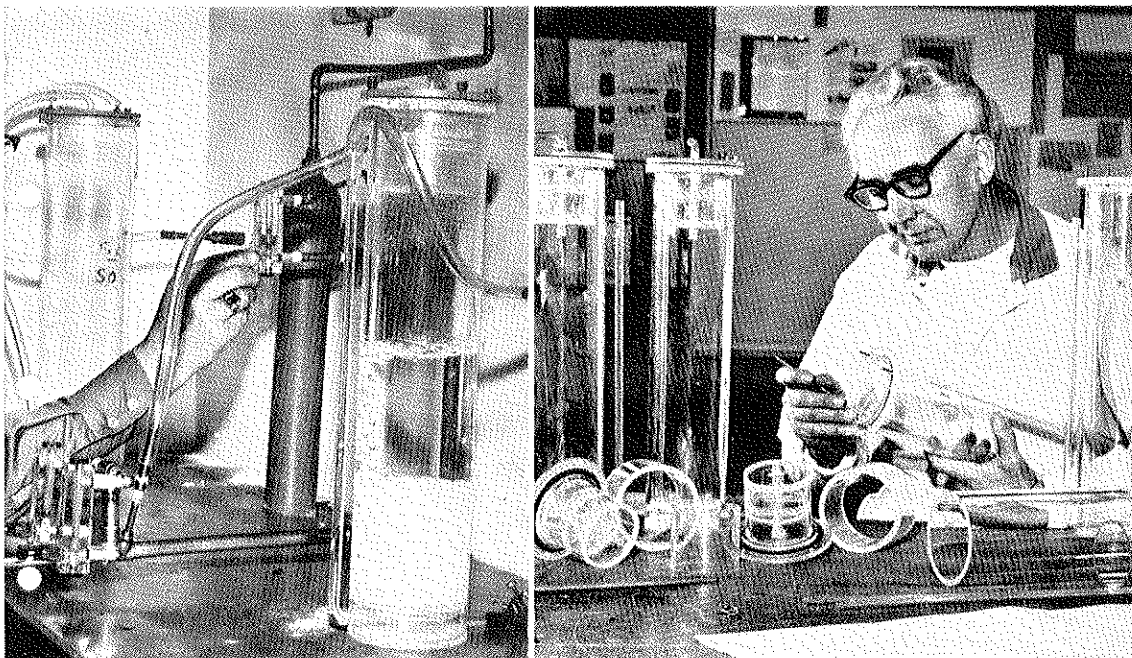
Some anti-pollution groups have invaded supermarkets and labeled shelves of soap powder. Why? To remind homemakers that the labeled soap contains polluting substances.

It's not too late!

Communicate your views whenever possible to City, State and National legislators . . . who are the agents for passing reasonable laws and for creating the agencies to apply these laws.

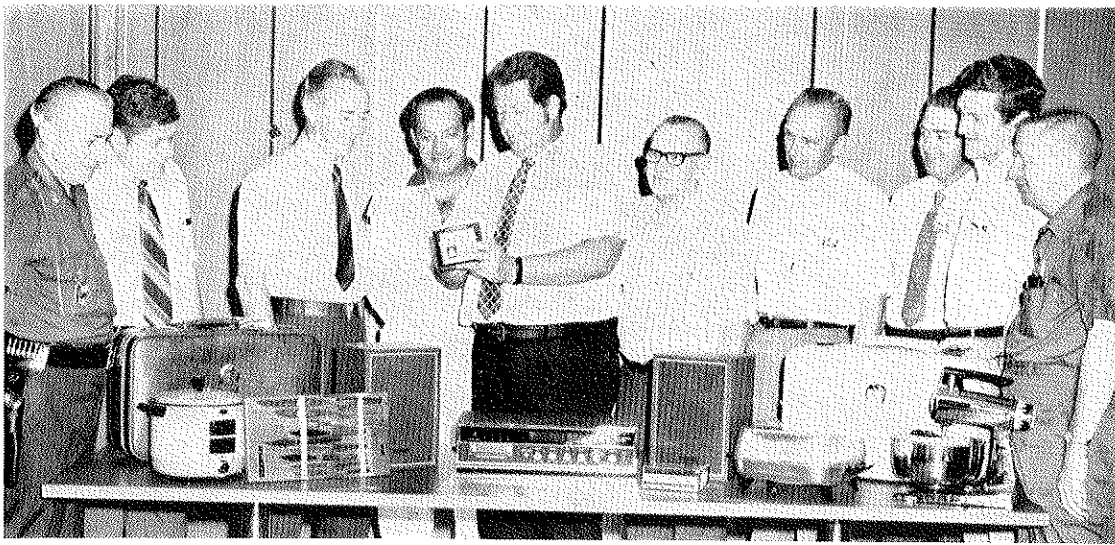
Your individual efforts will not go unnoticed.

Don't forget, pollution is everybody's problem; try not to live with it!



ng checked by Sam Hulett is an Environ-
e Scrubber. Samples of air are run through the
n analyzed to determine various contaminan's.
cr. bers were designed at GAT and fabricated

by Ray Fankell (r) and shops maintenance personnel. Eventually
environmental scrubbers will be placed in the locations on and
adjacent to plantsite. Their operation will help us maintain a con-
tinuous picture of our environment.



INSPECTING THE LOOT — General co-chairman Jack Crawford and committee chairmen look over some of the many prizes to be given away at the annual Family Picnic July 27. Chairmen of the various activities are (l to r) (Bingo) Joe Rhea, D-112; (Horseshoes) John Murrell, D-511; (Grand Drawing) Bob Rutherford, D-801; (Bingo) Lou Donini, D-732; Jack Crawford, D-858; (Tickets) Mau-

rice Trowbridge, D-375; (Square Dancing) Andy Clausung, D-542; General co-chairman Gordon Johnson, D-224; (Adult Games) Bill Lemmon, D-858; and (Admission and Identification) Joe Parker, D-711. The committee reports preparations are going well for the annual family outing.



SERVICE ANNIVERSARY. A. B. (Art) Steger recalls his thirty years with Goodyear (June 18) with interest. Art has seen service with GAC in Akron and Litchfield Park, Arizona; Goodyear International (Java); and GAT in 1968. Art is currently senior engineer in general engineering.

CLASSIFIEDS

FOR SALE

1969 Cadillac Convertible. Lavender with white top; white leather upholstery; 6-way power seats; power steering and brakes; power windows; climate control; AM/FM stereo; tilt telescopic steering wheel. \$3375. Phone Portsmouth 353-6197.

RCA Victor Stereo high-fidelity portable phonograph; suitable for teenager, \$20. Phone Waverly 947-2859.

Dehumidifier. 1 year old. \$30. Phone Waverly 947-4056.

New Wedding Gown, never worn, size 10-12. **Royal Typewriter** (Standard). Phone Portsmouth 354-5856.

1969 Pontiac Catalina, two-door hardtop; 400 cubic inch two-barrel V-8 engine; factory air conditioning; tinted windows; variable ratio deluxe interior and deluxe wheel covers; AM/FM radio; front and power steering; power disc brakes; cordova top; remote control mirror; rear speakers; five good tires; Color, midnight green. \$1975. Phone Jackson 286-4940.

Picnic Schedule

11:00 a.m.	PARK OPENS
11:00 - 1:00 p.m.	SAFETY DRAWING PRIZE AND DART BOARD CONTEST
12:00 - 5:00 p.m.	FREE AMUSEMENT RIDES
12:30 - 2:00 p.m.	SQUARE DANCING (Pavilion Behind Putt-Putt Golf Course)
1:00 p.m.	ADULT GAMES (Behind Cafeteria)
1:00 p.m.	CHAMPIONSHIP HORSESHOE PITCHING CONTEST (Behind Bingo Area)
2:30 - 4:00 p.m.	BINGO (Adults Only)
4:00 p.m.	GRAND DRAWING

Tire Exchange Policy Revised

New car buyers will be interested in the new car tire changeover policy recently adopted. GAT employes or retirees making a new car tire changeover at the Chillicothe Goodyear Store will be reimbursed \$7.50 instead of \$5 as was previously announced in the Employee Tire Purchase Program.

Employees will be charged \$12.50 for the changeover; then when he submits the sales invoice and form G-521 (GT&R Employee Tire Purchase Refund Request), he will receive a total refund of \$7.50. This means that he will actually be paying a net charge of \$5.

Tire Purchase Refund requests, form G-521, may be picked up in Employment.

Brothers zigzag sewing machine with maple cabinet. Has been used very little, \$100. 32" maple finish folding door, \$20. Phone 947-5085.

1964 Nomad 16' trailer, wall to wall carpeting, refrigerator, awning 3-burner stove, sleeps 8. Reese hitch available with electric brakes. Call Minford 820-2660.

In Memoriam

Floyd W. Brown died June 19 at Chillicothe Hospital, Chillicothe, Ohio. Mr. Brown was a Production Process Operator in D-810 and is survived by his wife and two children.

In Sympathy

Mrs. Mary Walker, mother-in-law of R. M. Rutherford (D-801) died May 17, in Cuyahoga Falls, Ohio.

Mrs. Essie Barney, mother of Georgia M. Barney (D-228) died June 11, in Flatwoods, Kentucky.

Mrs. Bessie Louise Ice, mother of R. L. Ice (D-852) died June 16, in Charleston, West Virginia.

The WINGFOOT CLAN

GOODYEAR ATOMIC CORPORATION
A DIVISION OF THE GOODYEAR TIRE & RUBBER COMPANY
2200 W. 12TH ST. PITKETON, OHIO 45661

Published monthly in the interest of employes of the
Goodyear Atomic Corporation
An Equal Opportunity Employer

Industrial Relations Division
X-100 Bldg.,
P. O. Box 628
Piketon, Ohio 45661

Editor: Gordon Johnson Telephone: 289-2531

Member - International Association of Business Communicators

1971 Suzuki, 250 Street Bike. Excellent condition. Call after 5 p.m. Waverly 947-2854.



Golf Tournament Plans Are Finalized

GAT's 1972 golf activities were finalized at a recent meeting of the golf committee. Plans for the year include championship handicap and flight tournaments as well as playdays and league action for both men and women golfers.

MEN'S TOURNEY AUGUST 5

Men's tournament golf play will get underway August 5 at the Jaycee Golf Course in Chillicothe. Play will be for a company champion, runners-up, handicap and flight champions. Handicap champion and flight champion will be declared after 18 holes of play on August 5. Championship play will continue August 12 at Fairgreens Country Club in Jackson. Low totals for the 36 holes will be declared Company champion and runners-up.

WOMEN'S TOURNEY PLANNED

Renewed interest in women's golf brought about the organizing of a Women's Company Championship August 19 at the Chillicothe Jaycee Golf Course. The tournament will be an 18-hole event with both scratch and handicap Company champions declared.

All women employes or wives of GAT employes are eligible to compete in Company championship play. Those competing in the handicap tournament must turn in an official club average, a league average, or four 9-hole verified score cards, before the tournament.

Women interested in participating in Company championship play should contact Recreation.

Members of the 1972 Golf Committee are: Meredith Evans (D-401) and Anita Brower (D-224), Waverly; Ralph Nolfi (D-761) and Frank Geyer (D-233), Chillicothe; Harold Rouff (D-532) and Ned Billings (D-761), Waverly; John Henry (D-532) and Len Savage (D-552), Portsmouth; and Bob Overly (D-712) and B. J. Clark (D-527), Jackson.

Picnic Prizes

GRAND DRAWING

- Eight-track AM-FM Stereo System
- Patio Umbrella Outfit
- Portable Wagon Grill
- Lady's Luggage
- Men's Luggage
- Mixer
- Men's Electric Razor
- Lady's Hair Dryer
- Electric Grass Shears
- Fondue Pot
- Card Table Set
- Women's Wristwatch
- Men's Wristwatch
- Deep Fryer
- Outdoor Indoor Vacuum
- Multi-Cooker Fry Pan
- Cookware Set
- Electric Ice Cream Freezer

BINGO

- Servette Trays
- Portable Mixer
- Lady's Shaver
- Steak Knife Set
- Wall Clock
- Silverware Set
- Lady's Hot Comb
- Ice Cream Freezer
- 1/4" Drill Kit
- Coffee Percolator
- Electric Shoe Polish Kit
- Tid Bit Trays
- Electric Steam Brush
- Canister Set
- Corn Popper
- Coolers
- Bun Warmer
- Wallets
- Umbrellas
- Brunch Bags
- American Flag Kits

Return Requested

Goodyear Atomic Corporation
P. O. Box 628
Piketon, Ohio 45661

PIKETON, OHIO
BULK RATE
U. S. Postage
PAID
Permit No. 11